



Canal Walk, Burnley, BB12

£1,255 PCM

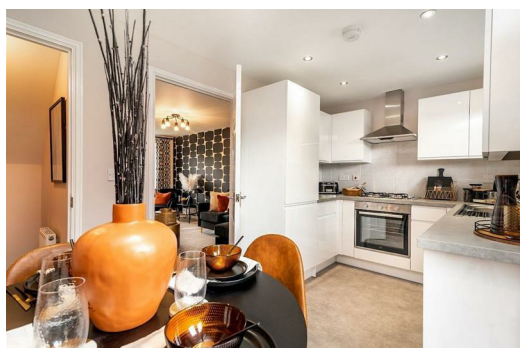
Discover Canal Walk, an exquisite semi-rural development of 2, 3, and 4 bedroom homes in the charming village of Hapton, alongside the scenic Leeds Liverpool Canal.

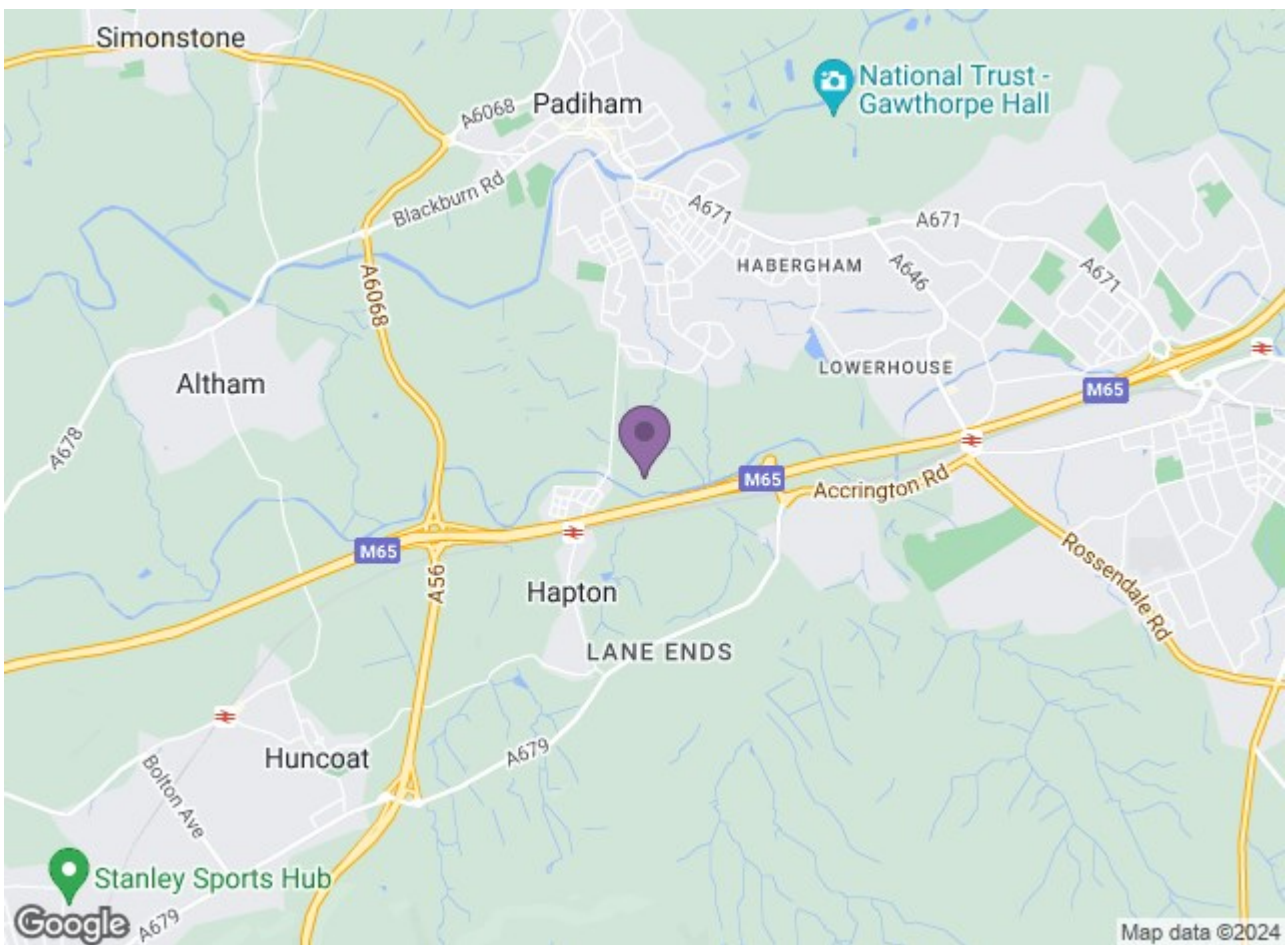
Meet The Kildare, a three-bedroom detached home that embodies beauty, comfort, and modernity. Discover the remarkable features and thoughtful design that make this property truly captivating.

Step inside and be greeted by a spacious living room, that provides a welcoming and versatile space for relaxation and entertainment. The contemporary kitchen diner awaits, offering a perfect blend of style and functionality. The under-stairs WC adds convenience to your daily routines, while the French doors from the dining area provide an abundance of natural lighting, connecting the interior with the exterior of the home effortlessly.

Moving up to the next floor, a master bedroom awaits, boasting luxury and tranquility. Indulge in the opulence of the en-suite bathroom, providing a private oasis. Two additional good-sized bedrooms offer ample space for family members, guests or a home office, ensuring everyone's comfort. A well-appointed family bathroom completes this level, catering to your everyday needs.

Indulge in the rich ambience of Burnley Market, offering fresh produce and diverse cuisine. Surrounded by idyllic countryside, Canal Walk offers a serene setting for your new home, all whilst enjoying the convenience of Hapton train station (just a two-minute walk away!) and local amenities. Plus, Burnley General Hospital is only a short drive away.





Energy Efficiency Rating		Environmental Impact (CO ₂) Rating	
Best	Worst	Best	Worst
A	G	A	G
83	98		